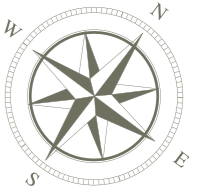


# Ivy 2 - floor 1



## apt. 1 | 132 m²

1. living room - 25 m²
2. balcony - 13.5 m²
3. kitchen - 17.5 m²
4. hall - 13 m²
5. guest bathroom - 3 m²
6. master suite - 13 m²
7. bathroom - 4.5 m²
8. bedroom - 15 m²
9. bathroom - 4.5 m²
10. bedroom - 10 m²

## apt. 3 | 113 m² | SOLD

1. living room - 29 m²
2. balcony - 7.5 m²
3. kitchen - 10.5 m²
4. hall - 15 m²
5. guest bathroom - 4.5 m²
6. bedroom - 13.5 m²
7. master suite - 14 m²
8. bathroom - 6 m²
9. walk-in closet - 5.5 m²
10. storage room - 4.5 m²

## apt. 2 | 103 m² | SOLD

1. living room - 40 m²
2. balcony - 9.5 m²
3. kitchen - 9 m²
4. hall - 3.5 m²
5. guest bathroom - 4 m²
6. bedroom - 23.5 m²
7. bathroom - 8.5 m²
8. storage room - 2.5 m²

## common areas

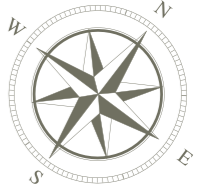
1. stairway - 18 m²
2. technical room - 8 m²
3. hall - 28 m²
4. sorted garbage room - 2.5 m²



### note

1. The curving and bending walls help to visually enlarge the space and bring a sense of flow and energy.
2. Our professional team draws the interior walls of the apartment in accordance with international standards, ensuring proper space distribution.
3. The interior major walls are missing due to the building's professional design. This provides you the freedom to lay the walls in any way you wish

# Ivy 2 - floor 2



## apt. 4 | 140 m² | SOLD

1. living room - 41 m²
2. balcony - 14 m²
3. kitchen - 8 m²
4. hall - 12 m²
5. guest bathroom - 3.5 m²
6. master suite - 14.5 m²
7. bathroom - 6.5 m²
8. walk-in closet - 4.5 m²
9. bedroom - 13 m²
10. bathroom - 7 m²
11. storage room - 4 m²

## apt. 5 | 192 m² | SOLD

1. living room - 25 m²
2. balcony - 15.5 m²
3. kitchen - 14.5 m²
4. hall - 23.5 m²
5. guest bathroom - 3.5 m²
6. bedroom - 26 m²
7. master suite - 33 m²
8. bathroom - 5 m²
9. bedroom - 13 m²
10. bedroom - 15 m²
11. bathroom - 4 m²
12. storage room - 3.5 m²

## apt. 6 | 76 m²

1. living room - 30 m²
2. balcony - 7 m²
3. kitchen - 8 m²
4. hall - 7 m²
5. bedroom - 13.5 m²
6. bathroom - 4.5 m²
7. walk-in closet - 3.5 m²

## common areas

1. stairway - 18 m²
2. technical room - 9.5 m²
3. hall - 19 m²
4. sorted garbage room - 2.5 m²



AMANO

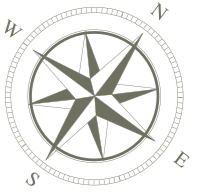
BY  
KHAKHAMYAN  
*heritage*



### note

1. The curving and bending walls help to visually enlarge the space and bring a sense of flow and energy.
2. Our professional team draws the interior walls of the apartment in accordance with international standards, ensuring proper space distribution.
3. The interior major walls are missing due to the building's professional design. This provides you the freedom to lay the walls in any way you wish.

# Ivy 2 - floor 3



## apt. 7 | 143 m<sup>2</sup> | SOLD

1. living room - 41 m<sup>2</sup>
2. balcony - 14 m<sup>2</sup>
3. kitchen - 6 m<sup>2</sup>
4. hall - 21 m<sup>2</sup>
5. guest bathroom - 3.5 m<sup>2</sup>
9. bedroom - 14.5 m<sup>2</sup>
10. bathroom - 8 m<sup>2</sup>
11. walk-in closet - 9 m<sup>2</sup>

## apt. 9 | 74 m<sup>2</sup> | SOLD

1. living room - 26 m<sup>2</sup>
2. balcony - 8.5 m<sup>2</sup>
3. kitchen - 7 m<sup>2</sup>
4. hall - 8 m<sup>2</sup>
5. guest bathroom - 5.5 m<sup>2</sup>
6. bedroom - 16.5 m<sup>2</sup>
7. bathroom - 5 m<sup>2</sup>

## common areas

1. stairway - 18 m<sup>2</sup>
2. technical room - 9.5 m<sup>2</sup>
3. hall - 19 m<sup>2</sup>
4. sorted garbage room - 2.5 m<sup>2</sup>

## apt. 8 | 182 m<sup>2</sup>

1. living room - 56 m<sup>2</sup>
2. balcony - 9 m<sup>2</sup>
3. kitchen - 14 m<sup>2</sup>
4. hall - 16 m<sup>2</sup>
5. guest bathroom - 4 m<sup>2</sup>
6. bedroom - 12.5 m<sup>2</sup>
7. bedroom - 15.5 m<sup>2</sup>
8. bathroom - 4 m<sup>2</sup>
9. master suite - 24 m<sup>2</sup>
10. bathroom - 4 m<sup>2</sup>
11. storage room - 3.5 m<sup>2</sup>
12. balcony - 10 m<sup>2</sup>



AMANOO

BY  
KHAKHAMYAN  
*heritage*



## note

1. The curving and bending walls help to visually enlarge the space and bring a sense of flow and energy.
2. Our professional team draws the interior walls of the apartment in accordance with international standards, ensuring proper space distribution.
3. The interior major walls are missing due to the building's professional design. This provides you the freedom to lay the walls in any way you wish

G. Hovsepyan 38/11, Yerevan 0011  
+374 91 00 01 07, +374 33 03 11 00

amanoo.am  
info@amanoo.am

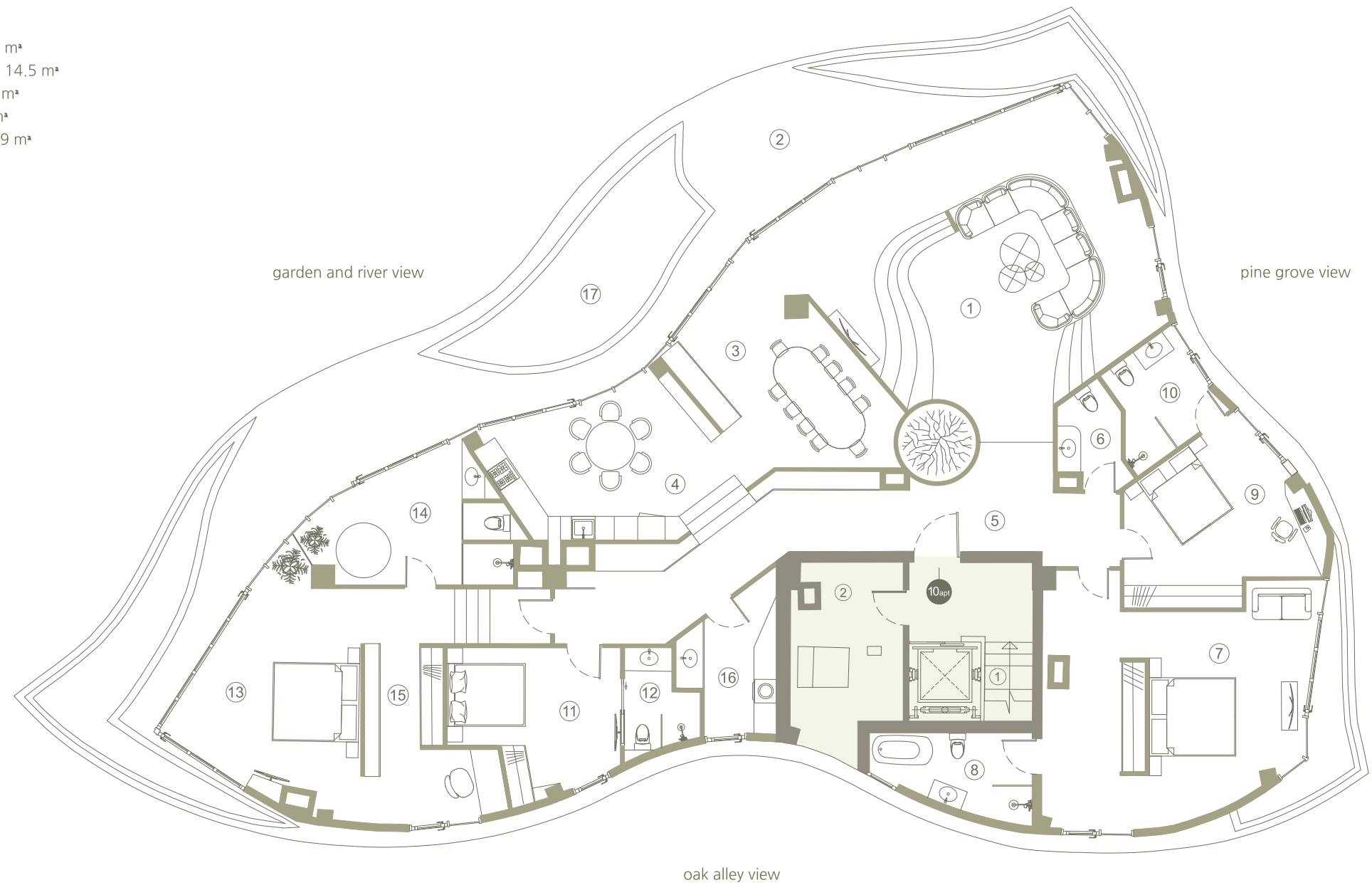
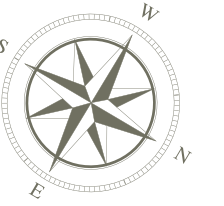
# Ivy 2 - floor 4

apt. 10 | 410 m<sup>2</sup>

1. living room - 62 m<sup>2</sup>
2. balcony - 88.5 m<sup>2</sup>
3. dining room - 5 m<sup>2</sup>
4. kitchen - 17.5 m<sup>2</sup>
5. hall - 31 m<sup>2</sup>
6. guest bathroom - 4 m<sup>2</sup>
7. bedroom - 37 m<sup>2</sup>
8. bathroom - 7.5 m<sup>2</sup>
9. bedroom - 18.5 m<sup>2</sup>
10. bathroom - 6.5 m<sup>2</sup>
11. bedroom - 14 m<sup>2</sup>
12. bath - 4 m<sup>2</sup>
13. master suite - 41.5 m<sup>2</sup>
14. master bathroom - 14.5 m<sup>2</sup>
15. walk-in closet - 21 m<sup>2</sup>
16. laundry room - 8 m<sup>2</sup>
17. swimming pool - 19 m<sup>2</sup>

common areas

1. stairway - 12 m<sup>2</sup>
2. technical room - 8 m<sup>2</sup>



AMANO

BY  
KHAKHAMYAN  
*heritage*



## note

1. The curving and bending walls help to visually enlarge the space and bring a sense of flow and energy.
2. Our professional team draws the interior walls of the apartment in accordance with international standards, ensuring proper space distribution.
3. The interior major walls are missing due to the building's professional design. This provides you the freedom to lay the walls in any way you wish